



Minnesota Mississippi River Parkway Commission
2nd Quarter Meeting
June 14, 2018 • 2:30 – 5:00 p.m.
State Office Building Room 300 North

DRAFT AGENDA

- | | | |
|------------------|---|---|
| 2:30 p.m. | Welcome & Introductions | Pierson |
| 2:35 p.m. | Approve Today's Agenda & Minutes from 3/15/18 | Pierson/All |
| 2:40 p.m. | Informational Presentation
- MN Trust for Public Land – Turning Back to the Rivers Project | DJ Forbes, TPL |
| 2:55 p.m. | Commission Business
- Budget – Review FY '18 YTD Report, Approve FY '19 Budget
- Legislative Update
- Executive Committee Meeting – Confirm Date
- MN-MRPC 4 th Quarter Meeting Date- Confirm Change to 11/29/18
- MN-MRPC Staffing – RFP Process Update
- Authorization for Chair to Approve Contracts | Handouts
Legislative Members/LCC
Miller/Committee Members
All
LCC/Review Team
All |
| 3:25 p.m. | National MRPC
- 2018 Semi-Annual Meeting – Review & Committee Reports
- MRPC/MRCTI Fall 2020 Meeting, Bemidji – Planning Update
- Upcoming MRPC 2018 Promotions/Campaigns
- 2019 Relay of Voices Project – Preliminary Overview | Lewis/Mulry/Samp/Zoff
Lewis/Samp/Zoff
Lewis/Miller
Lewis/Pierson |
| 3:55 p.m. | Commission Projects
- Plan Your Trip/Plan Your Project & Storymap –
Soft Launch Test Phase
- Letter of Support Outreach Process/Investment Inventory
- MN GRR Maps – Update | Zoff/All
Pierson/Miller
Miller |
| 4:15 p.m. | Old Business
- Bonding Letters of Support - Update
- The Falls Initiative – Consider Endorsing Coalition Statement | Miller
Pierson/All |
| 4:25 p.m. | New Business
- City of Dayton Letter of Support Request
NPS Rivers, Trails & Conservation Technical Assistance Application | All |
| 4:30 p.m. | Commission Member Updates
- At Large
- Lake Itasca to Grand Rapids
- Grand Rapids to Brainerd
- Brainerd to Elk River
- Elk River to Hastings
- Hastings to Iowa Border
- Agriculture
- Historical Society
- Natural Resources
- Transportation
- National Park Service/MISS | Lewis
Salminen
Larson
Samp
Pierson
Mulry
Huginin
Kelliher
Parker/Bonsignore
Bradley/Zoff
Anfinson |
| 5:00 p.m. | Wrap Up and Adjourn | |



Minnesota Mississippi River Parkway Commission
1st Quarter Meeting – March 15, 2018
State Office Building, St. Paul MN
MINUTES – Draft

Commissioners Present

Scott Bradley – Transportation Appointee
Lisa Havelka – Tourism Appointee
Lauren Larson – Grand Rapids to Brainerd
Cordelia Pierson – Elk River to Hastings
Sen. Patricia Torres Ray
Anne Lewis – At Large
Andrea Kajer – Historical Society Appointee
Karl Samp – Brainerd to Elk River
(via phone until 3:10)

Technical Advisors/Staff Present

Carol Zoff – Transportation
John Anfinson - NPS

Gina Bonsignore – Natural Resources
David Kelliher – Historical Society
Diane Henry-Wangensteen – LCC
Greg Hubinger – LCC
Chris Miller – Staff

Commissioners/Technical Advisors Absent

Rep. Sheldon Johnson
Sen. David Senjem
Paul Hugunin – Agriculture Appointee
Sheronne Mulry – Hastings to Iowa Border
Nancy Salminen – Itasca to Grand Rapids
Keith Parker – Natural Resources Appointee

Meeting called to order at 2:35 p.m. by Vice Chair Pierson followed by introductions. New members Lisa Havelka and Lauren Larson were welcomed. A quorum was present by phone at 2:45 and in person at 3:10.

Budget Report: Report in the meeting packet was referenced.

Executive Committee Report: Minutes in the meeting packet were referenced.

Regional Meetings/Elections Update: Miller reported that Headwaters/Northwoods and Crossings Region Meetings were canceled due to weather/road conditions and email votes were conducted. Congratulations to Nancy Salminen (Headwaters/Northwoods) and Lauren Larson (Crossings) on their election to the Commission. Scenic Region Meeting was held on February 28 - congratulations to Karl Samp on election to another term.

Approve Today's Agenda and Minutes from 11/9/17: Motion by Andrea Kajer, seconded by Scott Bradley to approve the agenda and minutes as presented. A roll call vote was taken with all voting yes – Larson, Samp, Pierson, Torres Ray, Lewis, Kajer, Havelka, Bradley. Motion carried.

Consider Change to 4th Quarter Meeting Date: Meeting is currently scheduled for November 15, which now conflicts with MN Scenic Byways Conference. November 8 and 29 were discussed as alternate dates and will be brought to the Chair for consideration.

MN-MRPC Staffing – Proposal Review Process: Andrea Kajer and Anne Lewis volunteered to work with Rep. Johnson on proposal process for a new MN-MRPC staffing contract.

MRPC Semi Annual Meeting – April 11 – 13, Quincy, IL: Anne Lewis, Sheronne Mulry, Karl Samp (Pilot registration/travel funded by MRPC) and Carol Zoff (MnDOT) will attend and report back.

Mississippi River Cities and Towns Initiative (MRCTI) 2020 Meeting: Carol Zoff shared details on an opportunity to potentially co-locate the National MRPC Meeting with the MRCTI Meeting in September 2020, in Bemidji. Motion by Anne Lewis, seconded by Scott Bradley to recommend that the MRPC consider holding the 2020 Annual Meeting in Bemidji, in coordination with MRCTI. Roll call vote taken with all voting yes – Larson, Samp, Pierson, Torres Ray, Lewis, Kajer, Havelka, Bradley. Motion carried.

National MRPC Committee Reports: Anne Lewis - Communications/Marketing Committee efforts include 2018 GRR 80th anniversary; upcoming culinary contest/promotion; and Drive the Great River Road

Month in September. Karl Samp - Board of Directors efforts include a benefits of membership document under development. Also noted that National Geographic Mississippi River Geotourism website remains operational for now, MRCC meeting coming up soon in St. Louis. MRPC National Office is harvesting data from the Nat Geo site in case it closes down. 2019 will be the "Year of the Great River Road" for the MRCC. Carol Zoff – Transportation Committee is working on a Corridor Management Plan for the full 10 state Great River Road. All committees will be involved.

Plan Your Trip Interactive Mapping Tool: Carol Zoff and Boxuan Xia provided a demonstration of the current version of the tool. The map includes 750+ places to see and things to do along the MN Mississippi River/Great River Road along with navigation and transit details. Suggestions included providing a mechanism to search for multiple types of resources in a certain area at the same time; and communication with DNR and partner organizations that developed the "Recreation Compass" about lessons learned. A full launch is planned in time for "Drive the Great River Road Month" in September. Soft launch to take place in early summer and feedback will be sought. Draft survey was referenced in the meeting packet. Members will be asked to take the survey and also for recommendations on others to involve in the process. Promotional material such as a rack card was suggested.

GRR Maps for Summer Travel Season: Discussion regarding possible purchase/shipping of National GRR maps to both fill the need and highlight the Great River Road 80th anniversary. General consensus to proceed.

Bonding Requests for GRR Community Projects – Consider Letters of Support: Details on projects requesting letters of support were provided in packet form and referenced. Testimony was given by Tom Evers of the Minneapolis Parks Foundation and Kirk Pederson, in favor of the requests for the Great Northern Greenway and Metro Regional Parks. Motion by Karl Samp, seconded by Anne Lewis to approve letters of support for all projects listed in the packet with the exception of the Metro Regional Parks request due to portions not related to the Mississippi River. Motion carried.

Discussion recommending additional outreach and a more comprehensive process in the future to identify Mississippi River/Great River Road related bonding projects. Motion by Anne Lewis, seconded by Lauren Larson to arrange a special MN-MRPC meeting as needed via phone to consider additional letters. Motion carried, with Samp voting no. Anne Lewis and David Kelliher volunteered to help with process improvement. Topic will also be brought to Executive Committee.

MN Scenic Byways Strategic Plan: Carol Zoff provided background and thanked the Commission for their responses to the email requesting feedback. The plan will be rolled out for implementation next fall.

Border to Border Trail Proposed Route: Overview of process included in meeting packet. Carol Zoff and Nancy Salminen have reviewed draft maps; their comments are on page 14 and will be forwarded.

Mississippi Multimedia Gallery: A project update was included in the meeting packet along with a draft letter of support for inclusion in promotional packets. Motion by Karl Samp, seconded by Scott Bradley to provide the letter with modifications to clarify the MN-MRPC's role related to support of fundraising. Motion carried.

Lake Itasca to Grand Rapids: Handout included in meeting packet.

Brainerd to Elk River: Handout included in meeting packet and referenced by Karl Samp.

Elk River to Hastings: Cordelia Pierson reported on a Dakota County project currently on hold, variety of river efforts in Minneapolis including the East of the River Group, and an initiative by Xcel Energy to plant hundreds of trees.

Explore MN: Lisa Havelka shared information on the recent Minnesota Tourism Conference – presentations and materials are available online. All were encouraged to subscribe to the EMT Express electronic newsletter. Discussion on working with communities to leverage the Mississippi River/GRR story.

Historical Society: David Kelliher thanked members for their letter of support for the Historic Fort Snelling bonding request. Project would rehabilitate two historic buildings, landscape to provide focus on the river, and expand storytelling to include a broader representation. Historic site season will be starting soon. A temporary exhibit at the Capitol - "Water" – was noted.

Natural Resources: Gina Bonsignore reported that DNR is gearing up for the summer season and the number of visitors to properties has been growing annually. There is a focus on teaching people outdoor activities. Fort Snelling State Park has been designated a "Gateway Park" for the system. Activities are being planned to recognize the 10th anniversary of Legacy program.

National Park Service: John Anfinson highlighted the paddle share program – now to span Coon Rapids though St. Paul. "Plant for the Future" is an effort in partnership with the Mississippi Park Connection – will include vegetation mapping of the full 72-mile MNRRA corridor. Major changes are likely coming for the river in the Twin Cities. The US Army Corps of Engineers Disposition Study for the gorge will begin this spring. American Rivers is recommending removal of locks and restoration of rapids.

Transportation: Scott Bradley provided background on MnDOT's efforts to re-sign several byways this summer, including the Great River Road. Work is scheduled to begin in April. Funding is now being sought for phase II in FY '19 for additional byways, then a final phase the following year. Carol Zoff provided the attached report and shared details.

Next Meeting – June 14, 2018, 2:30 – 5:00 p.m., State Office Building **300 North**

Adjournment - The meeting was adjourned at 5:15 p.m.

MnDOT March 2018 Update to Mississippi River Parkway Commission of Minnesota

GRR Wayshowing

- Let a construction contract July 28, 2017 to resign entire Great River Road, Lady Slipper, Avenue of Pines, Paul Bunyan, Bluff Country and Apple Blossom byways by September 2018
- GRR CMP sign database identified the need and providing the format for project scoping and pre-design.
- Funding by FHWA, MnDOT and MnDNR
- Pre-Construction meeting 3/14/2018: Tentative completion of GRR portion by June 29, weather permitting.
- FYI: Phase 2 MN Scenic Byway sign project to be let approx. 1/2019 to include Waters of the Dancing Sky, King of Trails, Veterans Memorial, Lake Country and MN River Valley byways.

Minnesota Scenic Byway Advisory Committee – 13 members from byways and MnSB Commission/agencies

- Developed a draft Minnesota Scenic Byway Program Strategic Plan –
 - Comments received from byways and staff through 2/28.
 - Final draft anticipated by Mid-April.
 - The 2018 MN SB Workshop to focus on plan implementation.
- Helps guide and prioritize MN Scenic Byway Program management
- Helps implement the MnSB MOU, renewed in 2016.
- Helps implement byway corridor management plans - 16 CMPs updated in 2015-16
- *Draft goals:*
 - **Education:** Identify and share knowledge and best practices.
 - **Funding:** Identify funding needs and sources where appropriate.
 - **Communication:** Develop public awareness, representation, engagement and support for Byways statewide.

National Advisory Committee on Travel and Tourism Infrastructure (NACTTI)

- Developed national travel and tourism infrastructure survey distributed by the American Association of State Highway and Transportation Officials – Committee on Planning
- Survey results described in a draft report, pending internal review.
 - 22 states replied between Jan 2 and 19, 2018
 - Replies represent a wide geographic distribution in the lower 48 states, but none from Alaska, Hawaii, territories or Tribes.
 - 2/3 of responding states are considering impacts to travel and tourism in project scoping, about 1/3 broadly and 2/3 specifically.
 - National Scenic Byway program cited as an example regional and national system framework offering engagement, measures and transportation purpose.
 - Many states rely on Commerce for tourism measures.
 - Funding, data and competing FHWA and state priorities and required measures are common barriers to more fully addressing impacts to travel and tourism.

Greater Minnesota Regional Parks and Trail Commission

- February 3, 2018 presentation on MN-MRPC and common objectives each Commission shares, as well as CMP implementation achievements and next steps.

Mississippi River Cities and Towns Initiative

- GMRPTC member and Bemidji Mayor Rita Albrecht and I spoke of the potential to collocate the Sept. 2020 Annual Meeting in Bemidji with the MRCTI.

Hamline University – Mississippi River Gallery

- 3/13 introduced Hamline staff to Rob Williams, MnDOT Rest Area Program Manager to demonstrate and discuss the opportunity to place these in targeted facilities.

MIN-MRPPC FY18 Activity/Project Budget

(Fiscal Yr End 6-30-18)

6-1-18

Activity/Item	Adjusted Estimate 3/9/18	YTD Expenses 6/1/18	Pending Expenses	Total Expenses	% of 3/9/18 estimate
Quarterly Meetings	\$4,200.00	\$1,672.30		\$1,672.30	40.00%
Special Meeting (tentative - dependent on need)	\$0.00	\$0.00		\$0.00	N/A
Executive Committee Meetings	\$600.00	\$418.55		\$418.55	70.00%
MRPPC Dues*	\$6,000.00	\$6,035.30		\$6,035.00	0.00%
Admin Contract	\$26,400.00	\$22,000.00	\$2,200.00	\$24,200.00	92.00%
Website & phone basic costs (website, phone, Constant Contact)	\$1,500.00	\$1,472.06	\$32.17	\$1,504.23	100.00%
National Meetings	\$7,000.00	\$6,388.50		\$6,388.50	91.00%
Regional Meetings/Elections (3 @ \$300 +)	\$1,000.00	\$98.60		\$98.60	10.00%
GIS/LIS Conference Presentation & Exhibit (CMP Implementation Project)	\$1,300.00	\$1,294.23		\$1,294.23	100.00%
GRR Day at the Capitol (CMP Implementation Project - postponed)	\$0.00	\$0.00		\$0.00	N/A
Mailing/Shipping Maps (10 State and MN GRR Maps)	\$800.00	\$191.80		\$191.80	24.00%
Additional Staff Hours (GIS/LIS Conference, Projects, etc.)	\$8,000.00	\$6,545.00	\$275.00	\$6,820.00	85.00%
Website Programming Changes - Minimal Regular Needs plus Plan Your Trip	\$1,000.00	\$0.00		\$0.00	0.00%
Other Meetings/Travel/Per Diems	\$1,000.00	\$420.30		\$420.30	42.00%
Maps - New Supply for 2018 Travel Season/80th Anniversary	\$4,000.00	\$0.00	\$5,700.90	\$5,700.90	142.00%
Overall Website Update including for Mobile Devices					
Ambassador Development Pilot					
Total	\$62,800.00	\$46,536.64	\$8,208.07	\$54,744.41	87.00%
Total FY '18 Allocation	\$63,000.00	\$63,000.00		\$63,000.00	
Amount Remaining	\$200.00	\$16,463.36		\$8,255.59	
* a portion of the \$15,000 total was paid at end of FY '17					

Allotment of FY 19 Funds

Legal Citation: ML 2017 1st Special Session Ch 77, Art 1, Sec 2, Subd 4 (approp to LCC). MS 16A.281 (CFD). General fund/1000 fund. Any unexpended funds roll to CFD at the end of FY19.

FY:	COMMISSION NAME:	AMOUNT:
2019	Mississippi River Parkway Commission Operations (MRPC)	63,000.00

<u>Object Code</u>	<u>Description</u>	
41000	Full-time	
41030	Part-time, Seasonal, Labor Services	
41070	Other Benefits	3,000.00
41100	Space Rental, Maintenance, and Utilities - Non-State Owned Space	200.00
41110	Printing & Advertising	800.00
41130	Professional and Technical Services - Outside Vendor	31,500.00
41145	IT Professional and Technology - Outside Vendor Services	
41150	Computer and Systems Services	1,000.00
41155	Communications	500.00
41160	Travel & Subsistence - Instate	4,000.00
41170	Travel & Subsistence - Outstate	6,000.00
41180	Employee Development	1,000.00
41190	Agency Provided Prof/Tech Service	
41300	Supplies	
41500	Repairs to Equipment and Furniture	
42010	Statewide Indirect Costs	
43000	Other Operating Costs (MRPC State Dues)	15,000.00
47060	Equipment	
TOTAL*		63,000.00

TOTAL*



*Total must be equal to: **63,000.00**
 Need to yet allot: **-**



Marketing Report – 10-State MRPC 2018 Campaigns

- Flavors of the Great River Road
 - 10-state effort from June 4 to August 24
 - Focus on intrinsic value of food to Mississippi River regions
 - Minnesota theme of Walleye and Wild Rice; June 18 – 24
 - National contest
 - Minnesota news release and itinerary featuring DNR, Minnesota Grown, Leech Lake Band of Ojibwe, White Earth Nation
 - Promotion coordination with Interpretive Centers and information shared with marketing partners
- 80th Anniversary of Great River Road
 - Anniversary logo
 - Tie-in with brand awareness campaign
 - MRPC oldest organization whose work ties together all of the Mississippi River states
- Pilot Wheel Branding Campaign
 - Pilot wheel selfie sticks for Interpretive Centers
 - Pilot Wheel key chain give aways
 - Pilot Wheel snapchat filters during drive month
 - New national maps later in summer/early fall
- Lonely Planet article
 - Southern Great River Road only
 - Hope is to encourage northern article next year



Mississippi River Parkway Commission of Minnesota

300 33rd Avenue South, Suite 101 • Waite Park, Minnesota 56387

Phone: 651-341-4196 • E-Mail: info@MnMississippiRiver.com

Members of the House: Sheldon Johnson (DFL – 67B) – Chair **Members of the Senate:** David Senjem (R – 25); Patricia Torres Ray (DFL – 63) **State Agency Appointees:** Paul Huginin – Agriculture, Scott Bradley – Transportation, Adam Johnson – Explore Minnesota Tourism, Keith Parker – Natural Resources, Andrea Kajer – Historical Society **Regional Appointees:** Nancy Salminen – Lake Itasca to Grand Rapids, Lauren Larson – Grand Rapids to Brainerd, Karl Samp – Brainerd to Elk River, Cordelia Pierson – Elk River to Hastings, Sheronne Mulry – Hastings to Iowa Border **Member at Large:** Anne Lewis

FOR IMMEDIATE RELEASE

CONTACTS: Chris Miller, Director, Minnesota Mississippi River Parkway Commission, 651-341-4196
Anne Lewis, Minnesota Mississippi River Parkway Commission Member, 410-493-0362

Minnesota Great River Road Celebrates Mississippi River Flavors

St. Cloud, MN (June 11, 2018) – When you think of culinary experiences and the Mississippi River, do burgers and pizza come to mind? Maybe your favorite sushi? Think again Minnesota Foodies. Join residents and travelers this June to explore the original flavors of Minnesota’s Mississippi River along the Great River Road: Walleye and Wild Rice.

Think of this as exploring your heritage via your taste buds. Walleye are common in the lakes the Mississippi River travels through as it makes its way south from the headwaters. And, wild rice, native to the Mississippi River for centuries, is indigenous in the headwaters region. These foods – their fishing and harvesting – are part of a rich state heritage and Minnesota’s Mississippi River Parkway Commission (MN-MRPC) will celebrate them June 18 – 24.

But don’t just ingest these featured foods. The MN-MRPC has developed a travel itinerary to help Minnesotans re-discover the Mississippi River through gastronomical roots. Active participation is key. Highlighted on the itinerary are places to get on the river to fish, as well as places to learn to harvest and take in Ojibwe tribal wild rice processing.

Other Mississippi River states, as part of the 10-state Mississippi River Parkway Commission, are celebrating their favorite food heritages as well as part of a promotion running from June 4 to August 24. Nearby Wisconsin will celebrate cheese/dairy and beer June 11 – 17 and Iowa will feature farm-to-table foods and pork tenderloin sandwiches the week of July 4th.

For more information about Minnesota’s Walleye and Wild Rice Itinerary go to www.mnmississippiriver.com. To enter the 10-state Flavors of the Great River Road contest, visit <http://experiencemississippiriver.com/flavors>.

More on Minnesota’s Mississippi River Parkway Commission

Minnesota’s Mississippi River Parkway Commission (MN-MRPC) is a statutory Commission, recognized in 1963, whose mission is... To preserve, promote and enhance the scenic, historic and recreational resources of the Mississippi River, to foster economic growth in the corridor and to develop the national, scenic and historic byway known as the Great River Road. In Minnesota, the Great River Road National Scenic Byway spans 565 miles, 43 communities, 20 counties, three tribes and six unique destination areas.

The MN-MRPC is part of the larger [10-State National MRPC](#) organized in 1938 to celebrate the Mississippi River by developing the Great River Road Scenic Byway. The 10 states include: Arkansas, Illinois, Iowa, Kentucky, Louisiana, Minnesota, Mississippi Missouri, Tennessee and Wisconsin. The National MRPC is the oldest organization whose work ties together all of the Mississippi River states.

###



Experience the Flavors of Minnesota's Great River Road!!

Celebrate the flavors of the Minnesota Great River Road's Mississippi River on your next road trip!! Wild Rice and walleye, straight from the river, are featured as some of the best and are classic Minnesota flavors! Bonus - you can fish yourself for the treasured walleye in many locations and experience the beautiful Minnesota outdoors at the same time. Choose one of the days below or choose them all... Just leave a "gone fishin" note and hit the road!



Before You Go: Place your order for **Native American-Harvested wild rice** online from the White Earth Nation at <http://realwildrice.com/wild-rice/> and gather inspiration from the recipes. For community information by region, including local tourism guides to help you find **local restaurant gems** where someone else will cook the wild rice and walleye for you, visit <http://www.mnmississippiriver.com/links.cfm>. For farmers markets and more local flavors along the way, look to **Minnesota Grown** to guide you - <https://minnesotagrown.com/>. And, the Minnesota DNR has a great online list of outfitters and boat rentals to help you plan before you leave home <https://www.dnr.state.mn.us/watertrails/outfitters.html>.

Day 1: Begin the day at the Mississippi River headwaters in Itasca State Park, get your fishing license at the Jacob Brower Visitor Center, and pick up a copy of MN fishing regulations or check them at <https://www.dnr.state.mn.us/fishmn/regs.html>. Then launch your own boat or rent kayaks and canoes right at the park. Sleep under the stars in the park's campgrounds or enjoy the rustic historic architecture of Douglas Lodge. https://www.dnr.state.mn.us/state_parks/park.html?id=spk00181#homepage

Day 2: Follow the Great River Road to beautiful Lake Bemidji State Park, where you can continue to try for walleye from shore or boat, then camp at the park or find many lodging opportunities in nearby Bemidji or at surrounding river and lake resorts. Don't forget to try a local restaurant! https://www.dnr.state.mn.us/water_access/index.html offers public water access maps and safety tips.

Day 3: Fish walleye in lakes the Mississippi River runs through as it journeys east including Andrusia, Cass, Winnibigoshish, Ball Club and Pokegama. Restock your wild rice supply at the Leech Lake Band of Ojibwe Main Office at 15756 State Hwy 371 NW, Cass Lake, MN 56633 or online at <https://www.lwildrice.com/wild-rice-products.html> where you can also find recipes and history. For members of many Native American cultures, wild rice is not just a crop; it's a sacred component of their culture.

Day 4: Museum Day in Little Falls! Start at the Minnesota Fishing Museum, featuring over 10,000 artifacts related to Minnesota fishing. <http://www.mnfishingmuseum.com/> Grab some lunch downtown and head over to the Charles Lindbergh State Park and State Historic Site to soak in the beautiful setting and rich history.

Day 5: Below the St. Cloud dam, choose from over a dozen boat landings and fishing piers on the Mississippi between here and the Twin Cities to try your luck at fishing for walleye, or learn why this area is home to some of the best small mouth bass fishing in the state. For details about this stretch of river go to https://www.dnr.state.mn.us/watertrails/mississippiriver/seven_more.html

Day 6: Experienced paddlers can go low on the water to try their hand fishing walleye in the Twin Cities stretch of the Mississippi River by renting a kayak at <http://paddleshare.org/>, providing access to the river within the Twin Cities' very own National Park, the Mississippi National River & Recreation Area. Fishing piers, boat landings and marinas offer river access throughout this stretch too.

Day 7: From Hastings to the Iowa border, this section of Mississippi River offers three riverfront state parks and multiple DNR and local boat landings and marinas. The Mississippi Bluffs region is also home to the Upper Mississippi River National Wildlife and Fish Refuge, an angler's paradise https://www.fws.gov/refuge/Upper_Mississippi_River/Winona_District.html. Charming river towns along the way will tempt you to extend your Flavors exploration by offering great restaurants, farmers markets and more!

For more to see and do along the Minnesota Great River Road, visit www.mnmississippiriver.com

- 1 Lake Itasca, MN
- 2 Bemidji, MN
- 3 Cass Lake, MN
- 4 Bena, MN
- 5 Deer River, MN
- 6 Grand Rapids, MN*
- 7 Jacobson, MN
- 8 Palisade, MN
- 9 Long Lake Conservation Center, MN
- 10 Aitkin, MN
- 11 Crosby, MN
- 12 Brainerd, MN
- 13 Little Falls, MN*
- 14 Rice, MN
- 15 St. Cloud, MN
- 16 Monticello, MN
- 17 Elk River, MN
- 18 Minneapolis, MN
- 19 St. Paul, MN
- 20 Prescott, WI
- 21 Bay City, WI
- 22 Pepin
- 23 Alma, WI
- 24 Winona, MN
- 25 Trempealeau, WI
- 26 La Crosse, WI
- 27 Lansing, IA
- 28 Harpers Ferry, IA
- 29 Guttenberg, IA*
- 30 North Buena Vista, IA
- 31 Dubuque, IA
- 32 Bellevue, IA
- 33 Sabula, IA
- 34 Clinton, IA
- 35 Port Byron, IL
- 36 Quad Cities, IL/IA
- 37 Muscatine, IA
- 38 Oakville, IA
- 39 Burlington, IA*
- 40 Nauvoo, IL*
- 41 Warsaw, IL
- 42 Quincy, IL
- 43 Hannibal, MO*
- 44 Louisiana, MO
- 45 Elsberry, MO
- 46 Winfield, MO
- 47 St. Charles, MO
- 48 St. Louis, MO
- 49 East St. Louis, IL
- 50 Cahokia, IL
- 51 Valmeyer, IL



RELAY OF VOICES

The Great River Run

- 52 Ste Genevieve, MO
- 53 Chester, IL
- 54 Grand Tower, IL
- 55 Cape Girardeau, MO
- 56 Olive Branch, IL
- 57 Cairo, IL
- 58 Wickliffe, KY
- 59 Columbus, KY
- 60 Hickman, KY
- 61 Tiptonville, TN
- 62 Ridgely, TN
- 63 Ripley, TN
- 64 Fort Pillow, TN
- 65 Covington, TN
- 66 Randolph, TN
- 67 Memphis, TN
- 68 West Memphis, AR*
- 69 Anthonyville, AR
- 70 Hughes, AR
- 71 Marianna, AR
- 72 Helena-West Helena, AR*
- 73 Clarksdale, MS
- 74 Deeson, MS
- 75 Rosedale, MS
- 76 Scott, MS
- 77 Greenville, MS*
- 78 Eudora, AR
- 79 Lake Providence, LA
- 80 Tallulah, LA
- 81 Vicksburg, MS
- 82 Port Gibson, MS
- 83 Church Hill/Fayette, MS
- 84 Natchez, MS*
- 85 Vidalia, LA
- 86 Black Hawk, LA
- 87 Morganza, LA
- 88 New Roads, LA
- 89 St. Francisville, LA
- 90 North Baton Rouge, LA
- 91 South Baton Rouge, LA
- 92 St. Gabriel, LA
- 93 Darrow, LA
- 94 River Region, LA
- 95 River Region, LA
- 96 Kenner, LA
- 97 New Orleans, LA
- 98 St. Bernard SP, LA
- 99 Myrtle Grove, LA
- 100 West Pointe a La Hache, LA
- 101 Buras, LA
- 102 The Mouth of the River, LA

In collaboration with over 100 communities, a team of artist athletes will start in July 2019 from the Headwaters of the Mississippi River on a 112-day journey to listen to the movement and lives of those living along the great river as they travel on foot to the Mouth in Louisiana.

GOALS / Relay aims to:

- Get people moving
- Build a culture of listening
- Use new research methods in the field of dance
- Bring human stories into conversation with scientific data

NEEDS / You can be involved in Relay:

- Offer time, teach us about your community
- Brainstorm and shape how Relay impacts your region
- Build engagement through social media and events
- Connect us with local citizens who know the River
- Help us secure space to land and launch in your town
- Share local rules, permits, and policies
- Connect us with interested parties

VISION / A day in the life of Relay:

- Welcome us into your town around 2pm
- Spend the afternoon one-on-one with a Relay Team member
- Organize for an event with the Relay Team
- Send us off the next morning and run, walk, bike with us

BIG PICTURE / 100 days along the Great River:

- Build regional tourism along the Relay route
- Contribute to an archive of 600 voices spanning the River
 - Region distributed to all river communities
- Create a fitness economy with the Great River Ultra
 - Endurance Run and Local Community Races
- Use social media #hashtags to get the Great River trending

2018 MN Legislative Session
Bonding Projects

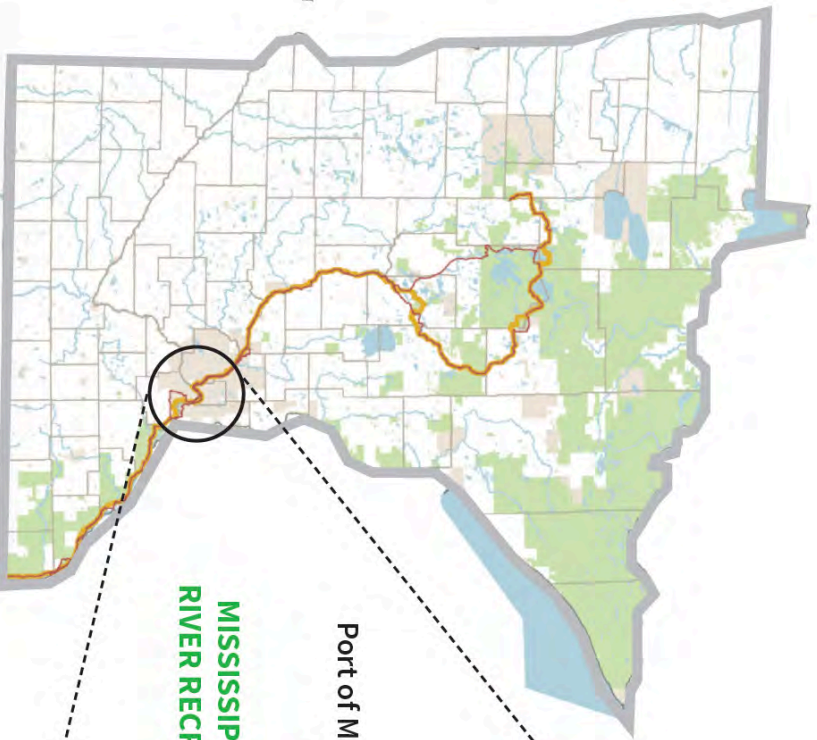
Organization	Project	Request	2018 Bonding Funds
Letters Provided by MN-MRPC			
MnDOT	Stone Arch Bridge	13,000,000	1,000,000
MN Historical Society	Historic Fort Snelling Visitor Center	30,000,000	15,000,000
City of Brainerd	Cuyuna Lakes State Trail, Brainerd Mississippi Riverfront	2,675,000	
City of La Crescent	Wagon Wheel Trail	2,500,000	2,500,000
City of Little Falls	Highway 27 Bridge	30,000,000	
Minneapolis Parks & Recreation	Great Northern Greenway/26th Ave N Overlook	3,000,000	
City of Red Wing	Riverfront Trail	9,500,000	
City of Wabasha	Riverfront Revitalization/National Eagle Center	9,600,000	8,000,000
Total		100,275,000	26,500,000
Other River/Byway Related Projects			
Goodhue County	Goodhue County Historical Museum Repairs/Renovation		616,000
City of Minneapolis	Upper Harbor Terminal Redevelopment		15,000,000
City of Saint Paul	RiverCentre Parking Facility		5,000,000
City of Saint Paul	Bruce Vento Nature Sanctuary Visitor Center		3,000,000
Total			23,616,000
Grand Total			50,116,000
Draft 6-6-18			

>> The Falls Initiative

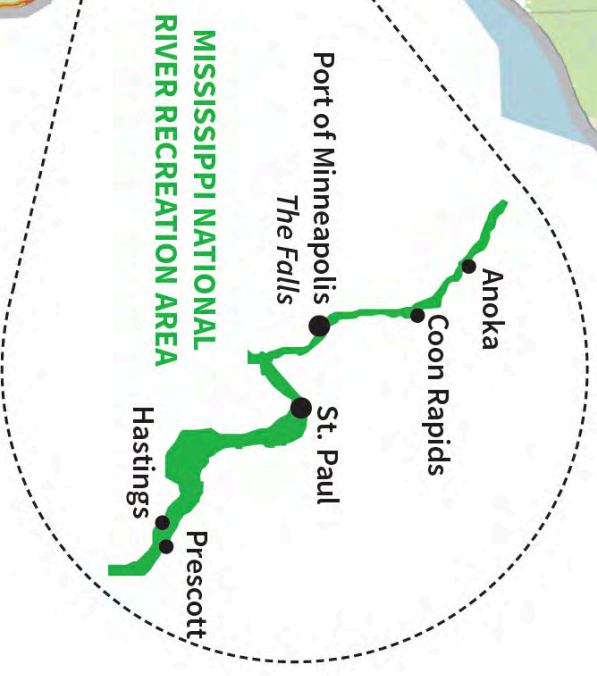
Implementing a Shared Vision for the Upper Lock



THE 10-STATE **GREAT RIVER ROAD**, A NATIONAL SCENIC BYWAY, FOLLOWS THE MISSISSIPPI & IS CALLED “THE BEST DRIVE IN AMERICA”



THE “MISSISSIPPI HEADWATERS STATE” CLAIMS 565 MILES OF THE TOTAL ROUTE, CROSSING 43 COMMUNITIES IN 20 COUNTIES



THE FALLS, SITED AT THE ONLY WATERFALL ON THE MISSISSIPPI, ANCHORS AN **ICONIC URBAN WATERFRONT** IN A **NATIONAL PARK**, ON THE **GREAT RIVER ROAD**

>> The Falls Initiative

Implementing a Shared Vision for the Upper Lock

*“We support the **St. Anthony Falls Upper Lock** as the centerpiece of an iconic civic & cultural destination, reflective of our shared history, for the use & enjoyment of all.”*



Friends of the Riverfront



Request for MN-MRPC Letter of Support - 6/12/18

City of Dayton

Tina Goodroad, City Administrator/Development Director

National Park Service Technical Assistance Opportunity

The City of Dayton is requesting technical assistance to help with implementation of the Stephens Farm Master Plan completed in 2016. This Master Plan is a multi-year effort to create a premier gathering place at the river for the community to enjoy. This project will include using the Master Plan to prioritize details of that plan for implementation. We would like to create programs aimed at the history of the farm and Mississippi river. This is an opportunity that will allow the City to create passive and active recreational activities at the riverfront that do not exist in Dayton today. We would like to prioritize the park improvements that will include an amphitheater, canoe and kayak launch, and gathering facilities for the community.

This park will benefit the Great River Road byway traveler by providing an off-road trail for this segment that currently is not signed as a through route due to insufficient shoulders. This trail will wind through the park and continue northwest to the historic village. Finally, we hope to use this technical assistance to seek grants for implementation of these elements.



MN Mississippi River Parkway Commissioner-at-Large Report

- Relay of Voices
 - Non-profit, Chicago-based dance/athlete event spanning whole river in the summer of 2019 to public engage people in towns along the way to move, listen and explore human interaction and scientific data (movement).
 - Early community involvement accomplished in May/June
 - Returning to Twin Cities in July – I will meet again for update
 - See attached introduction sheet
- Sponsorship search effort continuing on part of MRPC marketing committee
- MRCTI/MRPC co-located meeting update:
 - Minnesota to host in fall 2020 in Bemidji
 - Planning collaboration got underway with phone meeting late May
 - Trip to Headwaters and possible presentation for MRPC
- MN “Flavors” Campaign Assistance



Minnesota Mississippi River Parkway Commission
Metro Region Update
June 2018

Information below provided by John Mertens, Principal Planner – Dakota County

Completed/Nearly Completed

- Pine Bend Bluffs Trailhead is completed, the project was a \$1.1M partnership between Dakota County, MN DNR, and City of Inver Grove Heights. The project included a \$400,000 Scenic Byways Grant, secured with support from the Mississippi River Parkway Commission and MNRRRA. The trailhead also serves as the primary access to the 300 acre Pine Bend Bluffs SNA, providing bluff top views of the river and over ½ mile of shoreline.
- Mississippi River Regional Trail – Rosemount West segment is currently under construction and will be open for public use within the next couple of weeks. This project is a critical link in the overall MRT providing a connection through the TH52/55 section adjacent to Flint Hills Resources. This project received funding from the following sources:
 - o \$1 M Federal Transportation (TAP)
 - o \$400,000 Scenic Byways Grant
 - o \$440,000 NPS Match Funding

Not a Dakota County project but important River Connection:

- Point Douglas Regional Trail between Hastings & Prescott is almost done. I believe the Grand Opening is scheduled for August 2nd @ 10am – scenic trail along a former rail corridor!

Other Ongoing Projects:

- Mississippi River Trail - Harriet Island to Kaposia Landing: Dakota County and City of St. Paul are in final design for a major 4 mile trail connection between Harriet Island and South St. Paul. Project is funded primarily with a \$5.5 M federal transportation grant. Construction is scheduled for 2019.
- Mississippi River Trail – Rosemount East: **Final 2 mile** section of the 27 mile Mississippi River Trail between South St. Paul and Hastings. Partial funding has been secured and project is in final design. Partial funding includes Federal Lands Access Program (FLAP) grant and a Scenic Byways Grant. This project has had many challenges securing the required right of way, we continue to work with the Union Pacific Railroad, but actual construction year is yet to be determined.



**Minnesota Mississippi River Parkway Commission
Bluffs Region Update
June 2018**

Information below provided by Kristen Eide-Tollefson, Florence Township, Goodhue County

BLUFF PROTECTION Action Alert: Demand Goodhue County Commissioners protect Mississippi Bluff Lands from Mining

The Goodhue County Board of Commissioners is set to Vote June 5th on whether to grant a CUP for mining in a bluff in Frontenac

Update: The Goodhue County Planning Advisory Commission (PAC) took up the issue on May 14th. Florence Township's Land Use committee had prepared a presentation that focused on bluff and social and economic potential impacts of the proposed mine. There was also testimony from the Lake City Tourism Bureau and a citizen. After some discussion with the proposer, the PAC adopted the staff's findings of fact and voted (6-2) to recommend approval of the CUP to the County Board. A CUP for mining in Bluff Land is a dangerous precedent not only for Florence Township but for other townships in the valley. The proposer has not yet applied for a permit from Florence Township. The following week, the Board of Adjustment heard the County staff's case to approve a variance to the Bluff Land Ordinance that prohibits mining in the bluff impact zone. This time, the room was full and the Board stayed until well past 8 to hear the testimony opposing the Variance. The Board tabled the decision. The County Board of Commissioners needs to hear from the citizens of Goodhue County that the Mississippi Bluff Lands and the recreational tourist economy of the Great River Road must be protected from industrial scale mining operations.

Here is how you can TAKE ACTION:

1. Contact the Goodhue County Commissioners by June 5th. Let them know that Goodhue County should not allow mining in the sensitive, scenic bluff lands of the Hiawatha Valley.

SUGGESTED MESSAGE: "This mine has been closed for a number of years, due to failure to renew a permit. The owner wants to reopen and expand both gravel and sand operations, including blasting, crushing, and washing, adjacent to important wetlands. The proposed scale is industrial, 6 days a week 6 a.m.-10p.m, and up to 100 truck trips a day. Since he has been closed, we have new ordinances. Major public and private investments have been made in the recreational and tourist base of Florence Township, such as the Frontenac Golf Course and proposed Ski Jump which are right across Hwy 61. The mine has already impacted the bluff. Expansion would significantly alter bluff ecology, scenic viewsheds, and the character and recreational economy of Frontenac, the Great River Road and Ms. Bluffland Bike Trails. Directly above and below the mine pits, run major arteries of Jordan Sandstone. Protect our tourist economy and blufflands. Enforce the ordinance, don't grant a CUP that could open the door to Frac Sand mining in the Hiawatha River Valley._

Below is the contact information for the County Commissioners:

- District 1: Commissioner Ron Allen at 651-442-4425 or ron.allen@co.goodhue.mn.us
- District 2: Commissioner Brad Anderson at 651-258-4462 or brad.anderson@co.goodhue.mn.us
- District 3: Commissioner Barney Nesseth at 507-721-0118 (office) 507-990-7578 (cell) or byron.nesseth@co.goodhue.mn.us
- District 4: Commissioner Jason Majerus at 651-923-5185 or jason.majerus@co.goodhue.mn.us
- District 5: Commissioner Paul Drotos at 651-388-1042 or paul.drotos@co.goodhue.mn.us



**Minnesota Mississippi River Parkway Commission
Bluffs Region Update - Continued
June 2018**

2. Attend the Goodhue County Board of Commissioners meeting on Tuesday, June 5th beginning at 5:00 p.m., at the Goodhue County Government Center. There may or may not be opportunity for public comment, but your presence is important! The Goodhue County Government Center is at 509 West 5th Street in Red Wing, and the meeting is in the 3rd floor County Board Room. This is the vote that counts. You can view the record at the link below (under More Information)

3. Join us for the final decision of the Board of Adjustment on June 25th, on whether or not to allow a Variance to the County's Bluff Land Protection Ordinance for this mining project. Watch for an alert!

More Information:

- The agenda for the County

Commissioner meeting: <https://www.co.goodhue.mn.us/AgendaCenter/ViewFile/Agenda/1154?html=true>

Conditional Use Permit - Non-Metallic Mineral Extraction Facility

Request by Doug Mahoney (applicant/owner) for CUP for a Non-Metallic Mineral Extraction Facility. Proposed mining includes a limestone quarry and sand/gravel pit and associated processing/transport equipment and facilities. The total site area is 61.5 acres. The area to be mined is approximately 13.4 acres. This CUP proposes to reopen an inactive/lapsed non-metallic mining operation located at 32245 296th Street, Red Wing, MN 55066. Parcel 32.009.1201. Part of the S1/2 of NW1/4 and the N ½ of the SW 1/4, Sect 09 Twp 112 Range 13 in Florence Township. A2 Zoned District.

For further information see: Florence Township Land Use Committee comment in the CB Packet.